

# Class 1 Summer (2) 2019

Teacher - Mrs.Maule. Supported by TA – Mrs Manners.



Dear Parents/Legal Guardians,

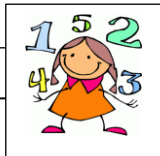
Welcome to the final half term of the year! It is lovely to see all the children again and to meet the new faces. We have a busy few weeks ahead, with exciting events such as our visit to Alnwick Gardens (Wednesday 12<sup>th</sup> June – please see separate letter), UNICEF Soccer Aid Fundraiser and Sports Day. These are just a few to mention! So please continue to check for letters, the school website, Weekly Head teacher's Blog, Facebook and Twitter to keep updated. Thank you.

Mrs Maule



## Literacy

We will explore different genres of writing including letters, narrative and non-fiction. The children will continue to learn new grammatical concepts, spelling and punctuation rules.



## Maths

Year 1 children will learn: reading the time to the hour and half past the hour using analogue and digital clocks, place value (tens and units), measure and compare capacity and weight, position and direction.

Year 2 children will learn: tell the time to quarter past and quarter to the hour and 5-minute increments ('minutes past the hour' 'minutes to the hour'), place value, capacity, position and direction and revision of previously taught concepts.



## Reading

The Y2 children will continue to use our Accelerated Reader program which involves reading their chosen book and then taking a quiz.

Please continue to read with your child daily and check their quiz results (recorded in their reading records) so you can see how they are progressing. Please remember to ask your child questions about the text as reading for meaning is very important.

Please continue to help support your child by reading 'little and often'. Remember to sign and date your child's reading record each time you read with your child so that we can change their book accordingly. Thank you.

Please keep your child's reading book and reading record in their book bag each day. Thank you.

## Phonics Screening Test (Y1)

The Y1 children have been working extremely hard on learning their letter sounds and will have their phonics screening test on **Thursday 13<sup>th</sup> June**. Please continue to help support your child at home by practicing reading the words in their yellow phonics books which Mrs Fortescue distributed earlier in the year.

The following website has some very helpful games based on real and alien words:

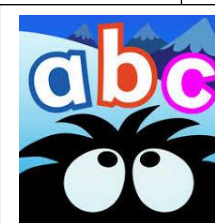
**[www.phonicsplay.co.uk](http://www.phonicsplay.co.uk)**

### Games include:

Picnic on Pluto,

Dragon's Den,

Buried Treasure.



The children are thoroughly enjoying our current topics and are looking forward to learning more:

**Science** – Plants and Seasonal Changes

**Geography** – Our Local Environment

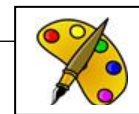
**History** – Emily Davison

**Computing** – using Beebots/Ozobots to plan routes around our local environment

**Art and DT** – flower and plant art through artists such as Georgia O’Keeffe, Van Gogh and William Morris.

**RE** –Christian Communities and Hinduism Lifestyles

**Music** – explore musical elements such as pitch and rhythm.



## PE

This half term Class 1 will be swimming on a **Monday** afternoon at Willowburn. Please ensure your child is dressed in their school sports uniform on this day.

Our second PE session will return to a **Wednesday**. The focus is athletics in preparation for Sports Day. Please ensure your child brings their school sports uniform to change into on this day, **including their hoody**.

We will also continue to run our Daily Mile each morning so it is advisable that your child comes to school wearing their trainers with their school shoes in a bag to quickly change into before lessons begin.

## Educational Visit

As part of our Science topic on Plants we will be going to Alnwick Gardens on **Wednesday 12<sup>th</sup> June** to take part in a workshop called ‘Roots and Shoots’.

This will be an all day visit (normal school collection time). Please see separate letter (sent on 4<sup>th</sup> June).

We look forward to sharing our photos from the visit on our class page.



## Water bottles

As we are now in the summer term and hopefully will have better weather the children need to make sure they are drinking plenty. Please ensure that your child brings a labelled water bottle to school each day. Thank you.

## Gentle reminders

**Monday** - Willowburn (swimming)

**Wednesday** - P.E.

Please ensure that your child has got both their reading book and reading record in their book bag each day.

Please ensure that your child brings a **labelled water bottle** to school each day.

Many thanks for all your help and support.

If I can be of any further help please let me know. *Mrs Maule.*

