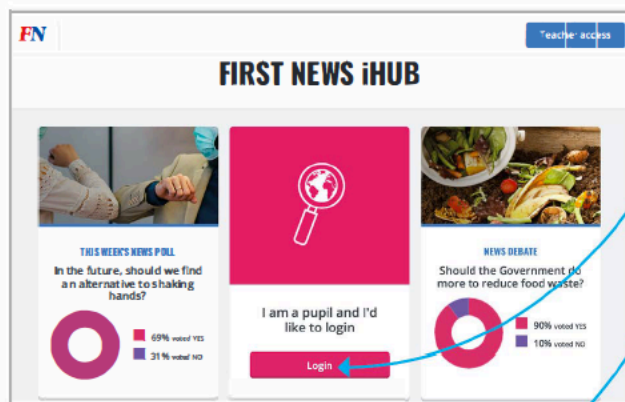


LOGGING IN TO THE FIRST NEWS iHUB

ihub.firstnews.co.uk

- Go to the First News iHub website:
ihub.firstnews.co.uk



- Click on the red 'Login' button.

- Type your **username** here.

- Next, click on your **password colour**.

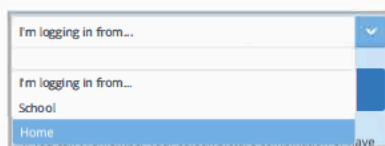


- Then, your **password symbol**.

- Your **password combination** will be displayed here.

- Now, click on the box that says: 'I'm logging in from ...' and choose 'Home' or 'School', depending where you are.

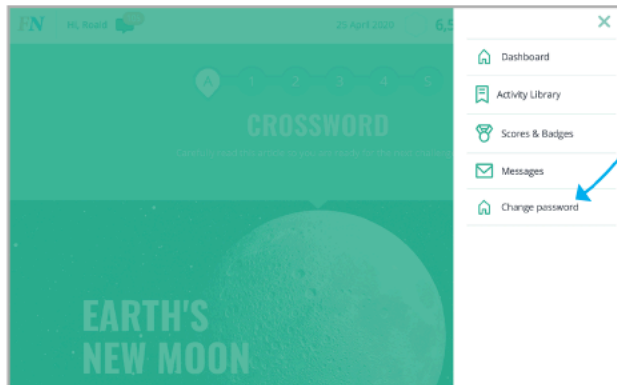
- Finally, click on the 'Login!' button to access your First News iHub account.



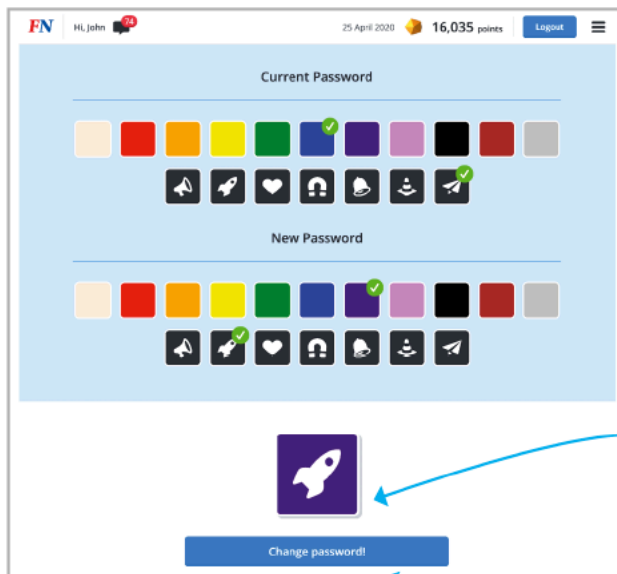
ihub.firstnews.co.uk

CHANGING YOUR FIRST NEWS IHUB PASSWORD

- Click on the three line **hamburger menu** in the top right hand corner of the screen.



- Select '**Change password**' at the bottom of the menu.



- To change your password, first you are asked to give your **current password**.

Click on both your current
✓ colour
✓ symbol

- To create a **new password**, choose both a new:

✓ colour
✓ symbol

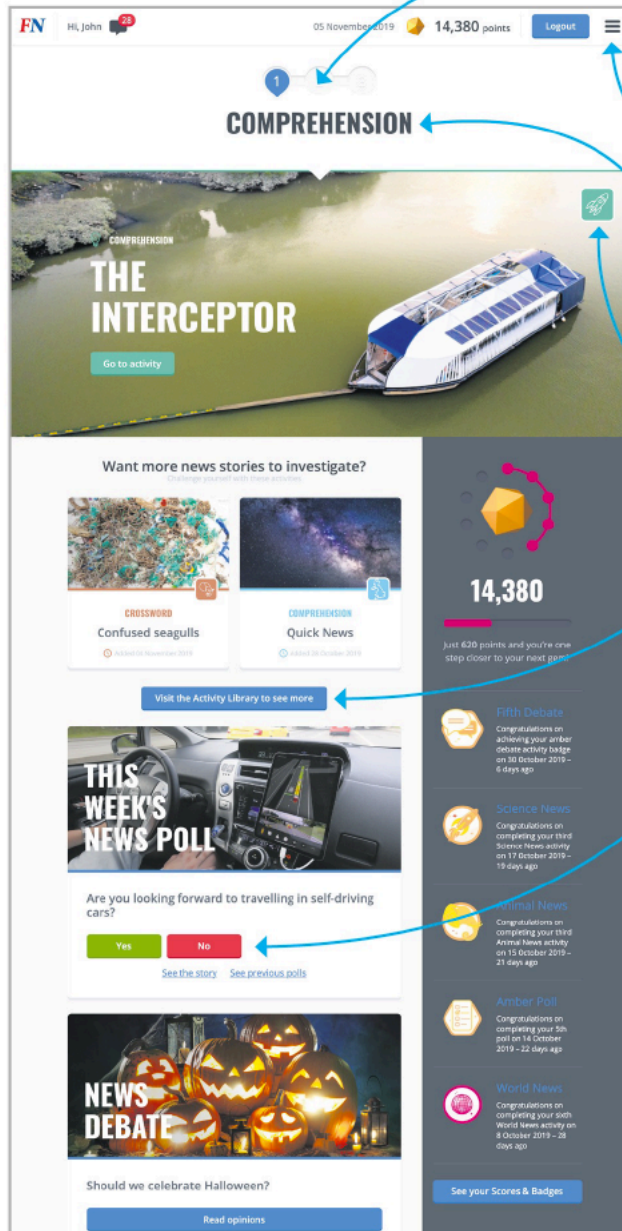
- Your **NEW password combination** will be displayed here.

- Remember to write down your new password colour and symbol in your homework diary.

- Your new password colour and symbol will be updated in your teacher's class list.

- Click '**Change password!**' to change to this new colour and symbol.

FINDING YOUR WAY AROUND THE IHUB



Click on the **numbers** in the **dashboard** to find the three most recent iHub activities.

Find your way around with the **hamburger menu**.

The **activity type** is shown at the top.

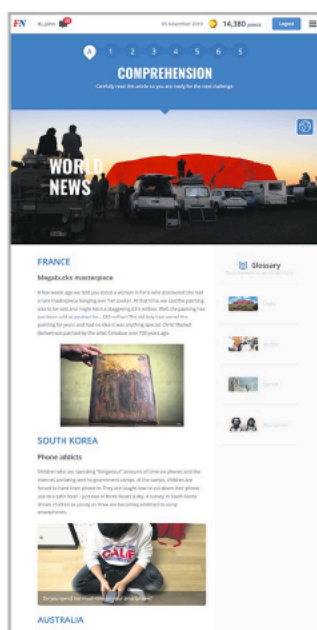
The **topic icon** tells you which section of First News the story comes from.

Find more activities in your **Activity Library**, plus ones you've finished or saved.

Have your say and vote in the weekly **News Poll**. Results are displayed in a pie chart.

● The **activity stages** are shown in the progress bar.

● **Points:** you get more points if you get an answer right first time, so don't guess. All your points and badges are stored on your Scores & Badges page.



Use the **Show article** tab to go back to the article to find the answers to questions.

● When you finish an activity, all your answers are stored on your **scorecard**. These are saved in your **Activity Library** and in your **teacher's Marking Centre**, so they can see how you are getting on.

Activity Scorecard

