



Alnwick Family Hub
01670 620430

northfamilyhubs@northumberland.gov.uk

Alnwick Family Hub Jan/Feb 2026

Monday

PEEP Babies 0-6 months
Starting 12th January
10.00-11.00am

Booking is required please call
to book a space

PEEP Babies 6-12 months
Starting 12th January
1:30-2.30pm

Booking is required please call
to book a space

HENRY Preparation for
Parenthood
11:30 - 13:00

Booking is required please call
to book a space

Come Along!
Baby & Me
10:00-11:00am
5th January

Meet new parents and
learn all that the Family
Hub has to offer.



Tuesday

Baby Weigh & Feeding
Friends
10.00-11.30am

To book a weigh-in
appointment, please call the
Health Visitors on:
0300 3732488

Feeding Friends is a drop-in
session for support on all
Infant Feeding matters

Stay & Play - 0-12 months
10.00-11.30am
Term Time only

Stay & Play - 1-5 years
1.30-3.00pm
Term Time Only

Wednesday

Calm Stay & Play
13:30-15.00pm

A quieter and more
relaxed Stay & Play
session for children with
disabilities and/or
additional needs.
Term time only

Healthy Families
from the start
(HENRY 0-5) Virtual
Starting 14th January
1:00 -2:00pm

booking required
please call to book

Preparing for
parenthood (HENRY)
Starting 14th January
3:30 - 5:30pm

booking required
please call to book

Registrar

Last Wednesday of
every month

To register your baby
at the Hub, book an
appointment via the
NCC website

Thursday

Stay & Play 0-5 years
Rothbury Fire Station
1.30-3.00pm

2nd Thursday of each month
Term Time only

SEND Connect
4.00-5.00pm

3rd Thursday of each month

Friday

Stay & Play @ The
Beacon
RAF Boulmer
0-5 years
10:00-11:30

Term Time Only

NEW!
Muddy Minis
Starting 16th January
10:00-11:30am
Outdoor Play

PEEP Early
Communicators
15 months - 30 months
Starting 9th January
1:30 - 2:30pm
Booking is required
please call to book a
place



Find us on Facebook
@North Northumberland
Family Hubs



To access our services:
Scan the QR code below
then complete the
membership
form or get in touch



Alnwick Family Hub

Take a look at our “what’s on” Padlet



Scan the QR Code or visit <https://nland.cc/NorthPadlet> to see what's on in the North online!

Healthy Relationships



Virtual healthy relationship workshops To find out more information or book on to the virtual workshop please scan the QR code

Parenting When Separated

Families going through separation can experience increased isolation and conflict. With our Parenting When Separated Programme, we can help parents to personally cope, and to co-parent effectively, to ensure their children cope and thrive.

Getting On Better Workshop

This is for any adult who cares for children aged 0-18years. The workshops aim to help adults manage their stress and communicate in better ways.



Henry Workshops

HENRY are passionate about babies and children getting the best possible start in life. This means supporting the whole family to make positive lifestyle changes, creating healthier and happier home environments, and building healthier communities.

- Preparation For Parenting
- Starting Solids
- Understanding childrens behaviour
- Fussy eaters
- Eating well for less
- Healthy teeth
- Looking after ourself

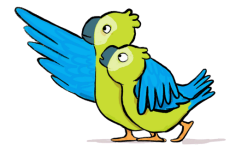


Alnwick Family Hub
01670 620430

northfamilyhubs@northumberland.gov.uk



peep



A range of groups supporting parents and children to learn together

PEEP Programmes

Our PEEP programmes are tailored to the individual needs of babies/toddlers and their families. Delivered through a range of fun activities and relevant information

- PEEP Babies 0-6 month
- PEEP Babies 6-12 month
- PEEP Toddlers 1-2years
- PEEP Early Communicators

Please call for more information on course start dates
01670 620461



To access our services:
Scan the QR code below then complete the **membership form** or get in touch