

Early Years Topic Letter

Spring 1

Happy New Year and welcome back! This half term we welcome Mrs Dodds into our Early Years classroom, she will be the teaching assistant in Early Years for the next two terms. The children will of course still see Mrs Chisholm around school and she will be visit Early Years to cover my PPA time on a Friday alongside Mrs Dodds.

Important reminders:

Forest School will now take place on a **FRIDAY** morning for the next half term at least. Please make sure your child is dressed in warm clothes and has a hat, scarf and gloves on this day. We will dress the children in our waterproof suits and wellies as usual.

Please remember to have your child's PE kit in school each week as we may take advantage of nicer weather or appropriate opportunities to change the time of PE or take part in extra PE sessions.

We hope to go shopping this half term as part of our 'What's on your shopping list?' topic, we will be sending out relevant information when this is organised.

This terms '**Stay and Play**' will take place on **Tuesday 23rd January**, all welcome — bring your little ones along.

Please continue to use your tapestry account, if you have forgotten your log in details please let me know and I can send a new link. Tapestry is hugely important in understanding your child's next steps and I place as many reminders and messages on there as possible. If you have no access to any technology and are unable to view your child's tapestry speak to a member of the Early Years team. Tapestry can be accessed on a phone, Ipad and computer through the website or on a free easily downloadable App.

The second reading challenge will be handed out on Monday 8th January and will also be uploaded to tapestry. Please complete this reading challenge by Monday 22nd January.

As always, if you have ANY concerns or queries please don't hesitate to speak to me! Either pop in or email the office and ask for an appointment and I will be happy to meet you.

Kind regards, Miss Dick.



What's on your shopping list?



Reception Literacy

This half term in Reception we will be moving on to include more writing in our Read Write Inc. sessions through ditty books. We will be putting a huge emphasis on reading alien words (made up words like - vot, fop, shlam) and recognising high frequency words (the words we have sent home on bookmarks). You can really help your child by reading these at home, along with their reading books.

We will be placing more emphasis on writing this half term and hope that the children will begin to have the confidence to apply their phonics skills in their writing, by attempting short sentences. For those children who are already writing short sentences, we will be trying to spell more red words accurately and remember full stops and capital letters.

We will also be focussing on writing for different purposes, for example — writing simple recounts, shopping lists and thank you letters.

We will be recapping rhyming and alliteration and thinking about the main events in a variety of stories.

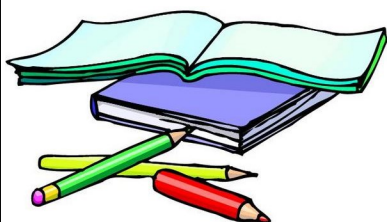
PLEASE remember to read regularly with your children I see a HUGE difference in reading confidence, enjoyment and progress in the children who read regularly at home.



Nursery Literacy

This half term in Nursery we will be focussing on talking about stories and making links with their own experiences. We will be discussing key events and characters in stories and begin to predict what could happen differently or make up our own stories. You can help your child at home by sharing stories and letting them talk about what they can see in the pictures, what might happen next and who the characters are.

We will be securing recognition of familiar logo's and our names this half term and will be working hard to write our name. Again, this is something you can help with at home by pointing logo's that mean something to your child (John Deere, Tesco, Macdonald's, Disney, Cbeebies etc) and their name. Children often don't notice their name in many places!



We will be introduced to alliteration and rhyming this half term and hope to make up our own silly rhymes.

Finally, we will be promoting independent emergent writing and mark making this half term, using correct colours when drawing pictures and giving meaning to what they produce.

What's on your shopping list?

Personal, Social, Emotional Development

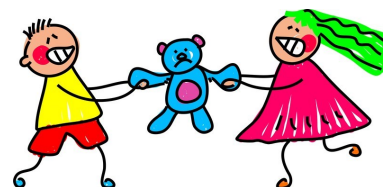
PSED is constantly promoted all day every day in Early Years for example, sharing, turn taking, understanding their own emotions, listening to their friends and following classroom rules are reinforced on an hourly basis on Early Years. This half term we will place particular emphasis on:

Having the confidence to share our own knowledge and understanding and share this in a group of children.

Working to solve our own conflicts (compromising or talking to their friend about it before coming to a teacher).

Enjoying the responsibility of carrying out small tasks themselves.

Taking turns and sharing.



Communication and Language

This half term we will be focussing on:

Promoting good listening skills and playing listening games that will help us with early phonics.

Promoting the use of why and how questions.

Anticipating key events in stories.

Being able to switch attention when busy doing something else and responding to other children appropriately while engaged in another activity.

Speaking in the correct tense.

Recounting experiences and imagining possibilities.



Physical Development

In PE this half term Reception will be taking part in 'Dance until you drop'.

Nursery will be concentrating on finding space and changing direction (following instructions).

We will continue with daily dough disco to improve our fine motor skills. Where necessary some dough disco interventions may be used.

We will continue to promote gross motor activities outdoors and at forest school.

We will be focussing on accurate formation of all letters in Reception and the letters in our name in Nursery.



We will be learning to understand the effect that exercise has on us and the importance of eating a healthy diet.



Reception Maths

This term in Maths the children will:

Use our shop role play area to identify and understand the value of money, recognising different coins.

Spend money themselves on a shopping trip.

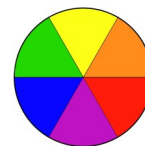
Compare and order various items by size.

During taught Maths sessions we will be:

Counting to 100, understand teen numbers as 10 and some more, identify and recreate linear patterns and begin to understand odd and even numbers, partition 10 objects, halving and doubling and looking at ways of measuring time.



Expressive, Art and Design



This term the children will have the opportunity to:

Investigate mixing colours and begin to identify prime and secondary colours.

Discuss different textures and explore different purposes of a variety of materials.

Further develop group narratives and explore and use the shop role play area.

Reception children will develop their dancing skills through PE sessions.



Understanding the World

This term we will be:



Thinking about different occupations, relating this to our shopping topic. The children will be sharing their own experiences of shopping.

We will be discussing waste and recycling and why this is important. We will continue to investigate different materials and their uses.

We will be programming beebots and ozobots to enhance our ICT skills.

The children will continue to attend forest school weekly.



Nursery Maths

In Maths this half term we will be focussing on:

Comparing and ordering sizes and using the language of size.

Recognising numbers to 5 and 10. For those children who recognise numbers to 10, we will be recognising numbers beyond 10 and beginning to add two groups of objects together and find the total.

We will be placing huge emphasis on securing our counting skills, counting up to 6 objects with 1 to 1 touch counting (beyond 6 where appropriate).

Our role play area will be a shop and we will be promoting the use of money and language relating to this.



RE This half term Reception will take part in RE sessions to understand Christianity and will focus on 'God'. Nursery will talk about special times, take part in special worships and learn about special festivals and celebration such as Easter and Chinese New Year.

SRE As part of our statutory SRE curriculum this half term we will be thinking about body awareness. The children will learn that humans produce babies that grow into adults, to know the accurate names for some body parts and what their function is and to consider ways they have changed since being a baby.